



THE TERRACE

at Havilah on Palmerston: Information Brochure

WELCOME TO THE TERRACE

With over 20 years of experience providing quality Aged Care to the Central Goldfields Shire and surrounding communities, Havilah continues to expand, with our latest facility included within our Havilah on Palmerston Site known as 'The Terrace'.

Comprising two floors of apartment style living, The Terrace sets a new standard in residential aged care, offering modern conveniences, homely comfort, and magnificent views of the local township of Maryborough.



MAINTAIN YOUR INDEPENDENCE

Situated in the heart of Maryborough, The Terrace offers the convenience of being a short stroll away from the local CBD, just minutes from medical clinics, pharmacies, restaurants, cafes, and the town's iconic Post Office.

Residents have the opportunity to engage in the various activities organised by our Lifestyle team on a daily basis if they choose to, including bus-trip outings to neighbouring districts and street walks to the local CBD.

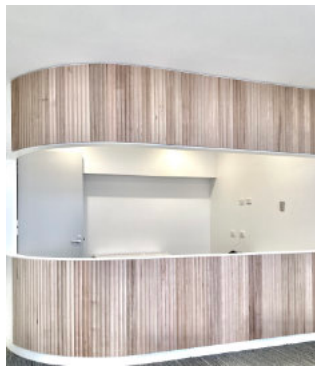


Pictured is ground floor dining, communal and servery kitchen and TV/information screen.

When residents are not travelling across the vibrant Victorian countryside there are plenty of activities to be enjoyed from within their comfortable home including arts and crafts, crosswords, cooking, dancing, musical entertainment, and significant celebration events such as Melbourne Cup Day, Easter, Mother's Day, Halloween, Christmas and many other occasions.

The Terrace outdoor balconies offer a great space for residents with a passion for gardening to transform this area into their own green retreat with an invitation to bring along any special pots or plants from home.

Whilst onsite laundry services are available, residents with free access to the laundry may choose to complete their own laundry at their leisure in the resident laundry.



Pictured is upper floor lounge and communal kitchen, upper floor reception and ground floor entry seating.

UPPER FLOOR PLAN

TERRACE

UNIT 19

BALCONY

UNIT 20

BALCONY

UNIT 21

BALCONY

UNIT 22

BALCONY

UNIT 23

BALCONY

UNIT 24

BALCONY

ROOF BELOW

VOID / SKYLIGHT

LOUNGE

STORE

STORE

RES LAUNDRY

CORRIDOR

CORRIDOR

DISWC

CLEANERS NURSE STATION

ACTIVITY SPACE

ACTIVITY ROOM

UNIT 13

BALCONY

UNIT 14

BALCONY

UNIT 15

BALCONY

LIFT LOBBY

UNIT 16

BALCONY

UNIT 17

BALCONY

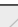




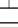





UNIT 18

BALCONY

GENERAL STORE

FIRE ISOLATED STAIR 1

FIRE ISOLATED STAIR 2

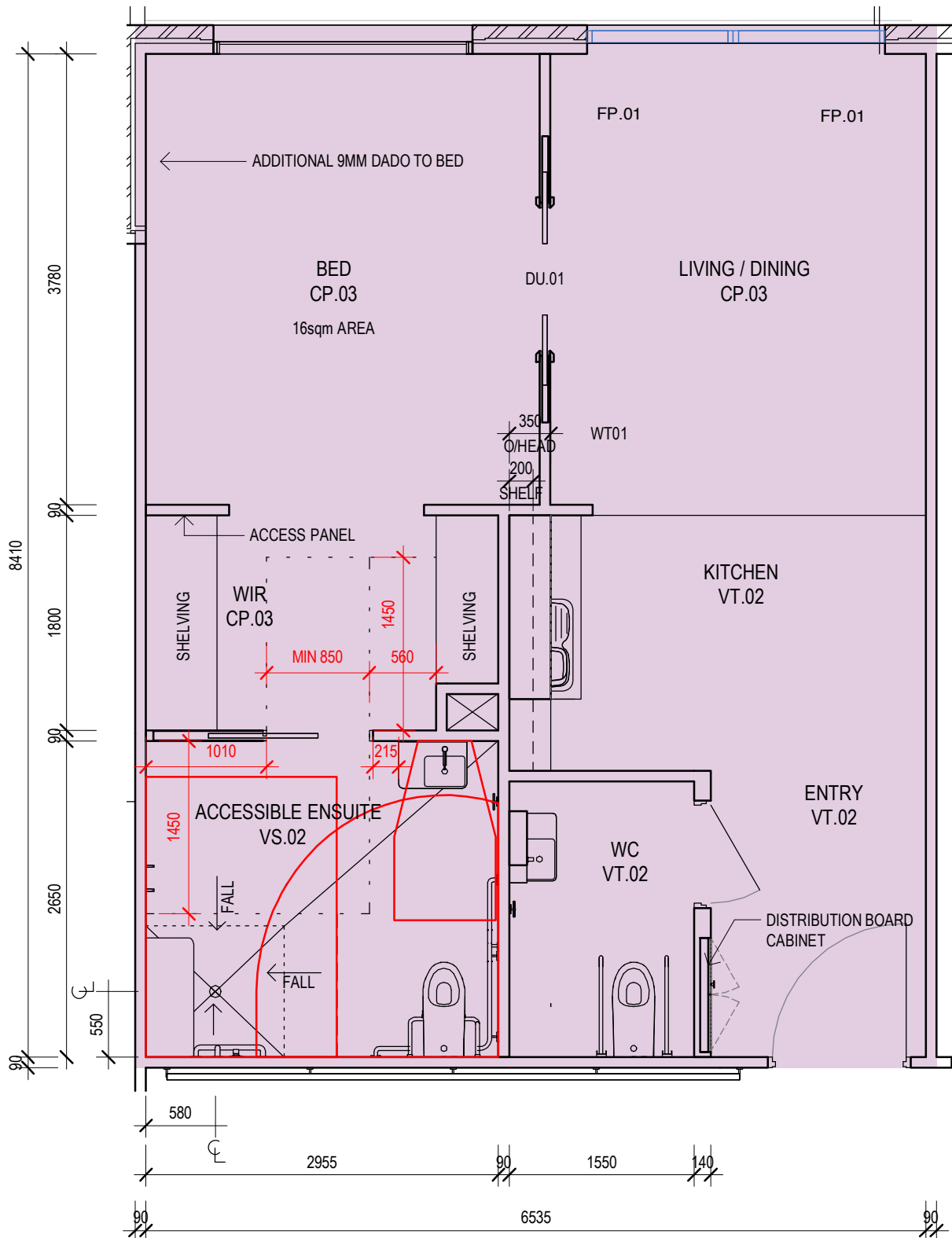
	CARPET 1 - CP.01
	CARPET 2 - CP.02
	CARPET 3 - CP.03
	CARPET 4 - CP.04
	CARPET 5 - CP.05
	VINYL 1 - VT.01
	VINYL 2 - VT.02
	VINYL 3 - VS.01
	VINYL 4 - VS.02
	VINYL 5 - VS.03
	TILES 1 - TL.01

single bedroom	single bedroom	double bedroom	double bedroom
----------------	----------------	----------------	----------------



ONE BEDROOM APARTMENTS

One bedroom units are as shown here and mirrored as shown in ground floor and upper floor plans.



SPACIOUS WITH ALL THE COMFORT OF HOME

With spacious interiors, The Terrace is suitable for couples or for singles with each of its 24 apartments offering a floorspace in excess of 54m². Included within each apartment is a full ensuite, separate WC, comfortable bedroom, plentiful storage space within the walk-in robe adjoining to the bedroom, homely sitting room, outdoor balcony, and a modern kitchenette. Secondary bathrooms are also included, offering added comfort for residents and their visitors. All apartments have large windows, allowing for a light and airy space for relaxing and welcoming guests. This also enables residents to take in the views of the tranquil surrounding gardens or the adjoining neighbourhood with many rooms also having wonderful views of the Maryborough skyline.

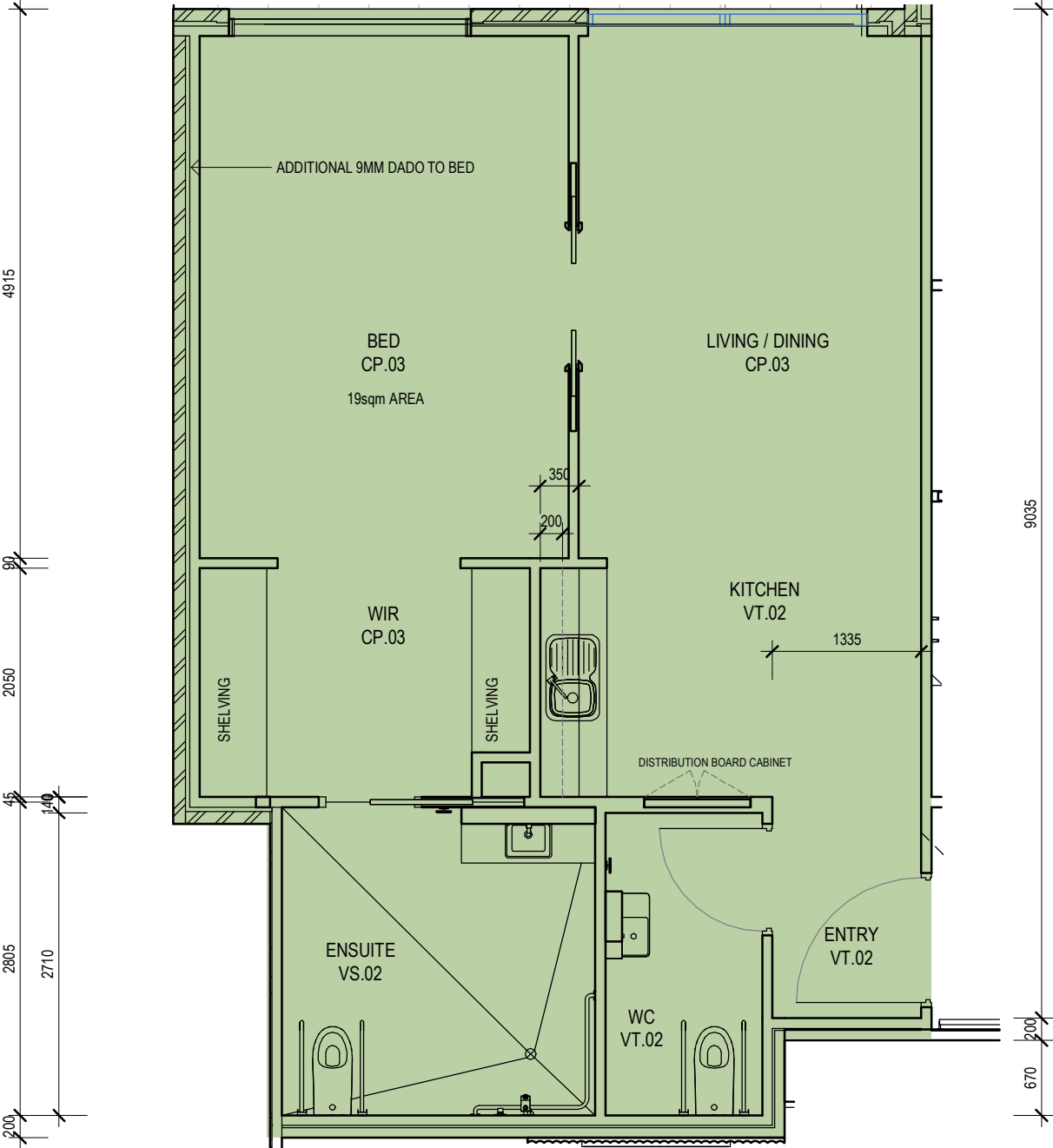
Whilst provisions such as a comfortable adjustable bed, fridge, kettle, and toaster are provided within each apartment, we encourage residents to make this space their home, bringing in their own personal furniture and household keepsakes. Our maintenance staff are happy to assist in hanging photo frames full of those precious memories on the wall throughout the apartment.

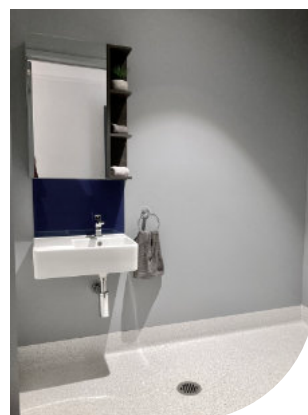
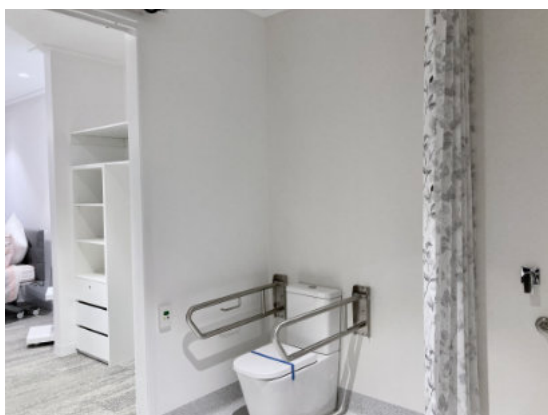
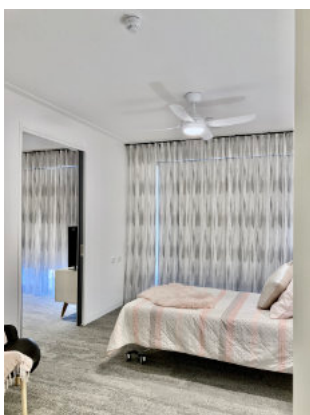
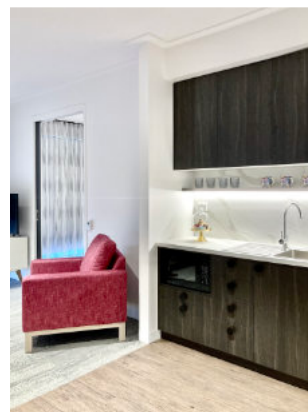
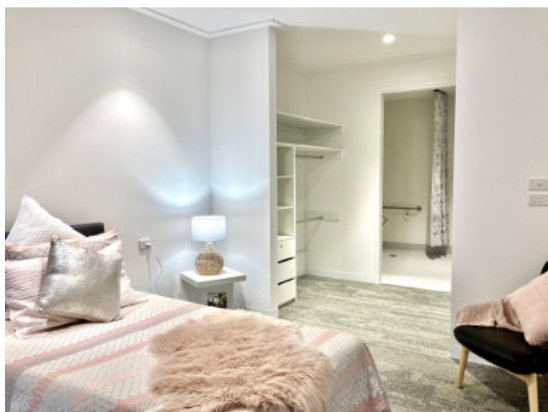


Apartment view, single bedroom.

ONE BEDROOM APARTMENTS

Unit 7 with larger corner balcony..

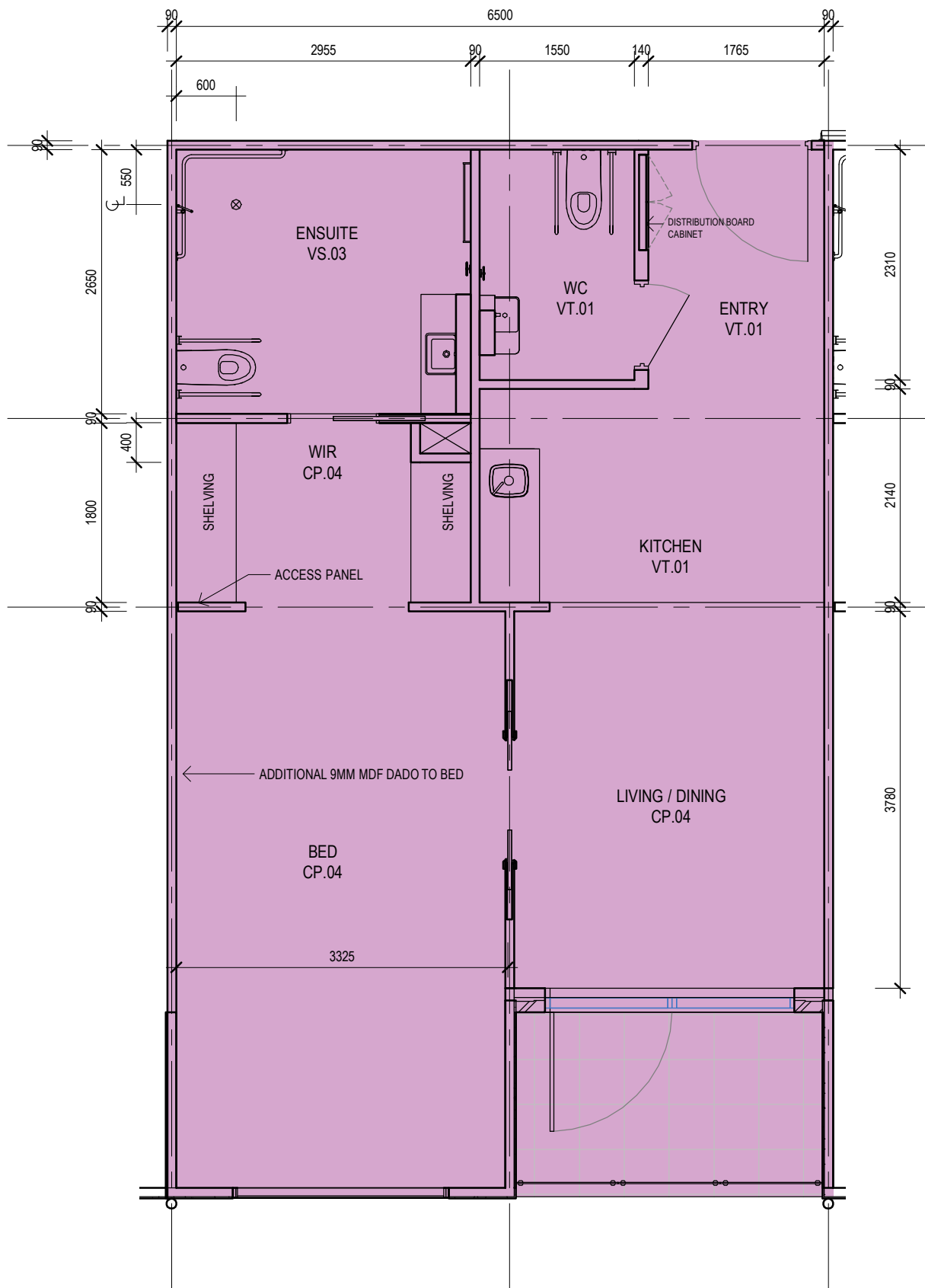




Pictured is a one bedroom apartment lounge, bedroom, kitchenette, dining area, master bathroom, walk in robe, and visitor bathroom.

TWO BED APARTMENTS

Two bed/twin units are as shown here and mirrored as shown in ground floor and upper floor plans..



LIFESTYLE PROVISIONS

Residents and their families will have peace of mind knowing that all the comforts of home are included within The Terrace along with added assistance from our friendly care staff.

Meals are prepared with only the best, quality, seasonal ingredients to suit all dietary requirements. Stunning communal dining and kitchen areas are easily accessible with the option also available to residents to dine in their own apartment.

Comfortable chairs flank the hallways, lounges and activity areas of The Terrace, creating atmospheric reading and meeting spaces to for residents and guests to relax and unwind.

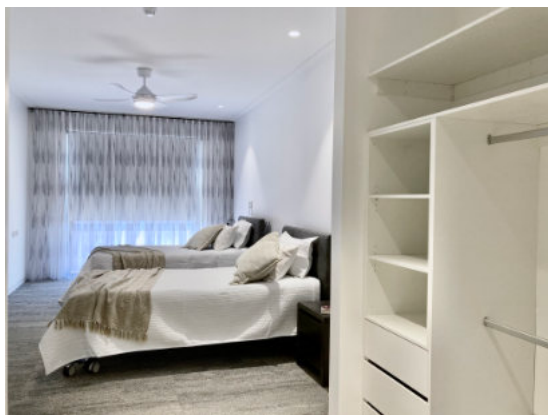
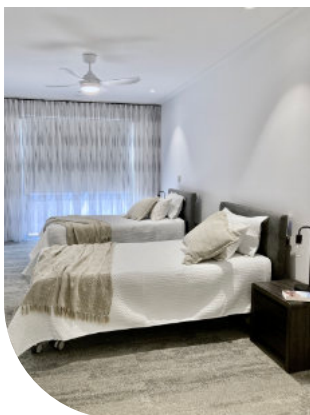
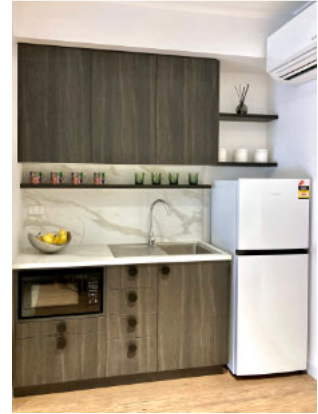
Kitchenettes are located on each floor of The Terrace, offering the convenience of everyday availability of tea, coffee, juice and biscuits to residents, family, and friends.

Each of the lounge areas include access to Foxtel for residents to enjoy at their leisure.

Just a short distance from The Terrace, included within Havilah on Palmerston, residents also have access to the High School Centre which includes internet/computer access, a recreation room, reception and kiosk services, hair and beauty salon, treatment and consulting rooms, and resident library.



Apartment view, twin bedroom.



Pictured is a twin bedroom apartment lounge, bedroom, kitchenette, dining area, master bathroom, walk in robe, and visitor bathroom.

KEY INCLUSIONS

Essential services included with daily living at 'The Terrace' include;

- ▷ 24 Hour nursing staff
- ▷ General practitioner
- ▷ On-site podiatrist, physiotherapist and psychotherapist
- ▷ Pharmacy
- ▷ Dietician
- ▷ Seasonal catering to suit all diets
- ▷ Cleaning and laundry
- ▷ Chaplaincy and church groups
- ▷ Hairdressing salon
- ▷ WI-FI connection
- ▷ State of the art fire protection

Key household items such as a fridge, toaster and kettle are included in each apartment with residents required to supply their own lounge furniture and TV upon admission. Full linen is also provided with the added option available to residents to also bring with them any additional linen required to make the apartment as homely as possible.

TO FIND OUT MORE INFORMATION

If you are interested in joining us as part of our growing Havilah community, please contact our reception on (03) 5461 7387 to book an appointment or a tour of the Terrace with our Admissions team. We look forward to your call.



Pictured is a digital render: each unit has its own private balcony for relaxing outside or creating your own private garden. This is the view looking back into your kitchen/lounge and bedroom from the balcony.



For more information and to
view our room pricing and
privacy policies visit our
website: www.havilah.org.au
or contact us at:

Havilah on Harkness
10am-4pm Monday to Sunday
Telephone 03 5461 7387
Email: harkness@havilah.org.au

Havilah on Palmerston
10am-1pm Monday-Friday
Telephone 03 5459 0140
Email: palmerston@havilah.org.au

